



DATA SHEET FOR FLP PUSH BUTTON STATION (LCS) WITH TERMINAL CHAMBER

TECHNICAL DATA:

- PRODUCT : CAT NO.-PBS/174
- ENCLOSURE : FLAME PROOF (Ex -d), Gas Group IIA , IIB
As per IS/IEC 60079-1 : 2014
- PROTECTION : WEATHER PROOF IP – 66 AS PER IS/IEC 60529:2001
(Reaffirmed 2014)
- AREA & TEMP. CLASS : Ex db IIA,IIB T6 Gb (EX tb / tc IIIC T85 C Db/Dc
(ZONE 1 & 2 & Zone 21 & 22)
- CERTIFICATION : CIMFR, BIS, PESO
- TEMP CLASS : T 6
- MATERIAL : DIE CAST ALUMINIUM ALLOY
- FINISH : EPOXY POWDER COATED SHADE AS PER IS : 5
- EARTHING : 1 No INTERNAL & 2 No's EXTERNAL
- HARDWARE : STAINLESS STEEL
- GASKET : 'O' RING ENDLESS GASKET NEOPRENE / SILICON
- NAME PLATE : SS NAME PLATE CUM WARNING PLATE
- ENTRIES : 2 Nos M20 / ½ " NPT / EQUIVALENT/UP TO M25

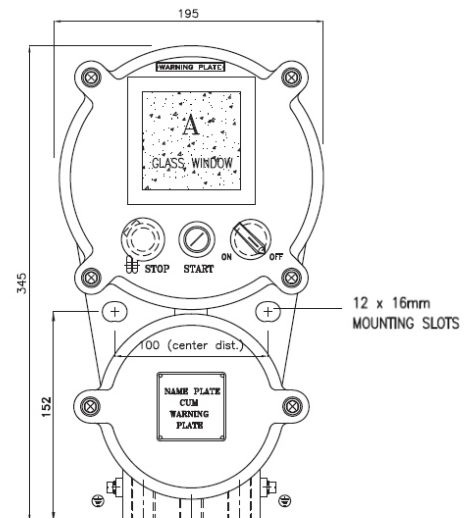


OPTIONS

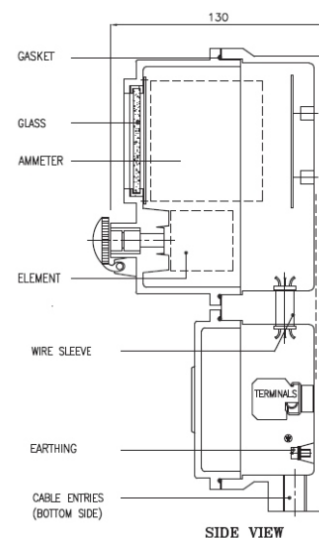
| SR. NO | PARTICULAR | OPTIONS |
|--------|--------------------------|--|
| 1. | MATERIAL OF CONSTRUCTION | STAINLESS STEEL |
| 2. | GLAND & PLUG | BRASS / SS / ALUMINIUM |
| 3. | COLOUR SHADE | 631, 632, 355, 7031, 7032 etc. |
| 4. | ELEMENT | 1 NO / 1 NC OR AS PER CUSTOMER REQUIREMENT |
| 5. | CANOPY | M.S POWDER COATED / FRP /GI |

SELECTION CHART

| SR.NO | COMBINATION |
|-------|---|
| 1. | ON/OFF PBS WITH AMMETER |
| 2. | ON/OFF PBS WITH SELECTOR SWITCH |
| 3. | ON/OFF PBS WITH AMMETER AND SELECTOR SWITCH |
| 4. | 2 PUSH BUTTON AND 2 INDICATION LAMP |
| 5. | 3 PUSH BUTTON AND 3 INDICATION LAMP |



FRONT VIEW



SIDE VIEW

NOTE:- PERMUTATION & COMBINATION OF COMPONENTS / ENTRIES AS PER CUSTOMER REQUIREMENT